

# COVID-19 UPDATE



STATE SENATOR  
**JIM RUNESTAD**  
15TH DISTRICT

**OFFICE:** 855.347.8015  
**E-MAIL:** [senjrunestad@senate.michigan.gov](mailto:senjrunestad@senate.michigan.gov)  
**VISIT:** [www.senatorjimrunestad.com](http://www.senatorjimrunestad.com)

#MISENATE

## STATUS UPDATE (4/28/20)

### CORONAVIRUS RESPONSE (MICHIGAN)

- **All Michiganders are required to wear facemasks when entering enclosed public spaces.**
- Governor Whitmer has issued 59 Executive Orders to deal with the public health crisis. Michigan has been under a declared state of emergency since March 10<sup>th</sup>.
- **Governor Whitmer declared a 'shelter-in-place' order as of March 24<sup>th</sup> that has been extended thru April 30<sup>th</sup>. She is seeking approval from the Legislature for an extension until May 15<sup>th</sup>.**
- The state has increased penalties for violating the stay-at-home order up to \$1,000 and threatened non-essential businesses with losing their license if they remain open. This civil fine is in addition to the \$500 criminal fine and 90 days in jail for violating the stay-at-home order.
- Governor Whitmer clarified her order banning groups of 50 or more to exempt religious places of worship from any penalties.
- The state is able to test 9,000 people per day. They would prefer to test 15,000 – 20,000 per day but the supplies are not adequate. They are only testing symptomatic individuals at this time.

### LATEST EXECUTIVE ORDERS

EO 2020-59: Replaces EO 2020-42 with new stay-at-home and business restrictions requiring the use of facemasks in enclosed public spacing but allowing golf courses (sans carts), bicycle repair shops, garden stores, landscapers and lawn mowers and allowing more stores to open up for curbside service and delivery of their formerly non-essential products but also requiring businesses to provide facemasks to employees who interact with the public.

EO 2020-61: Replaces EO 2020-30 suspending certain rules and regulations of the Public Health Code to surge more medical professionals into the field and extends until the end of the emergency.

EO 2020-62: Replaces EO 2020-29 mandating add'l screening for all people entering a prison facility, encouraging electronic communication, and promoting early release and extends until May 24<sup>th</sup>.

EO 2020-63: Personal protection orders are extended until July 21<sup>st</sup>.

[www.michigan.gov/coronavirus](http://www.michigan.gov/coronavirus) remains the best source of information on Michigan's response.

### CORONAVIRUS RESPONSE (STATISTICS)

There are currently **39,262** cases of COVID-19 in the state of **Michigan** with **3,567** deaths reported.

There are currently **1,004,908** cases of COVID-19 in the **U.S.A** with **57,812** deaths reported.

There are currently **3,094,829** cases of COVID-19 in the **World** with **215,461** deaths reported.

## SHUTDOWN ORDER FAQ

Governor Whitmer has ordered all travel outside our homes to be restricted EXCEPT for the following reasons: 1) Engage in Outdoor Activity; 2) Work in Critical Infrastructure Jobs; 3) Seek Medical Attention; 4) Obtain Necessary Supplies for Themselves and their Homes (*using delivery services to the maximum possible extent*); 5) Care for a Family Member or Family Member's Pet; 6) Care for Minors, Elderly and Other Vulnerable Persons; 7) Attend Court Ordered Services; 8) Volunteer to Provide Food/Shelter for Economically Disadvantaged Persons and People With Disabilities.

Businesses that are non-essential can still designate certain employees to show up to work “to conduct minimum basic operations.” **Curbside service and delivery is now available to retail shops to sell formerly classified non-essential goods.**

Grocery Stores:	OPEN	<b>Golf Courses:</b>	<b>OPEN – NO CARTS</b>
Pharmacies:	OPEN	<b>Lawn Care / Nurseries:</b>	<b>OPEN</b>
Gas Stations:	OPEN	<b>Moving / Storage Ops:</b>	<b>OPEN</b>
Banks/Credit Unions:	OPEN	Gyms/Health Clubs:	CLOSED
Liquor Stores:	OPEN	Non-Essential Retail:	CLOSED
<b>Bicycle Repair Shops:</b>	<b>OPEN</b>	Cigar/Vaping Lounges:	CLOSED
Car Repair Shops:	OPEN	Amusement Centers:	CLOSED
Hotel/Motels:	OPEN	Car Sales:	CLOSED
Hardware Stores:	OPEN	Cinemas/Theatres:	CLOSED
Appliance Repair:	OPEN	Drive-In Movies:	CLOSED
Bars/Restaurants:	TAKEOUT ONLY	Charter Fishing:	CLOSED
Pot Shops:	TAKEOUT ONLY	Firearms Retailers:	CLOSED

Critical Infrastructure workers are not expected to stay home but report to work as usual. Those involved in critical infrastructure are in the following fields:

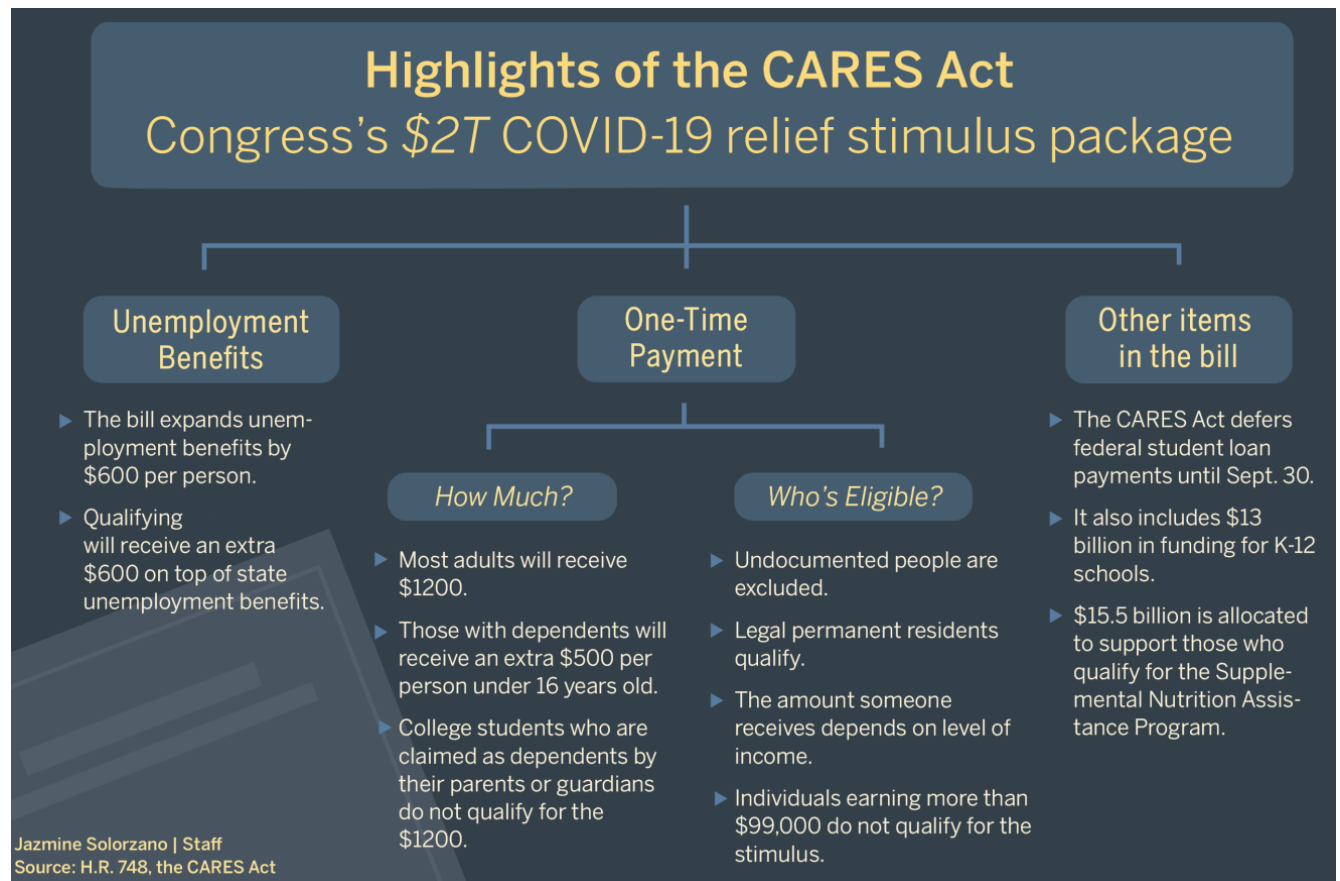


The Department of Homeland Security has released an update to their Critical Infrastructure List that states are using for their basis of their shutdown orders. You can view it here:

<https://www.cisa.gov/publication/guidance-essential-critical-infrastructure-workforce>

The state has created a web page to help businesses navigate whether or not their employees meet the definition of critical infrastructure for an exception to EO 2020-21. Go here: <https://bit.ly/2QR1tKf>

## CORONAVIRUS RESPONSE (FEDERAL STIMULUS)



The first stimulus checks began arriving in people's bank accounts as of Monday, April 13<sup>th</sup>.

## CORONAVIRUS RESPONSE (PUBLIC HEALTH)

**Doctors now recommend that all Americans wear a facemask when interacting in public.**

In order to use our finite testing resources most effectively, the following is the method of identifying and testing potential COVID-19 afflicted:

- ~~1) Contact your primary physician or nearest urgent care center if you think you are exhibiting symptoms. CALL THEM first and DO NOT drive to their location.~~ **You no longer need a doctor's order to get tested. Anyone with symptoms can get tested at a regional testing facility.**
- ~~2) Your medical provider will call a 24/7 hotline to seek approval to have you tested.~~
- ~~3) If you are approved, you will be directed to one of many drive thru testing sites being set up around the state. If you are not approved, you may still go through a private lab to arrange for your own testing.~~
- 4) Results of the test are generally expected in 5-7 days. The state is ramping up its own in-house testing procedures to create a faster turnaround time.

Symptoms of COVID-19: Fever, Cough, Shortness of Breath

**The best way to prevent illness is to avoid being exposed to the virus which is spread from person-to-person contact. Wash your hands often for at least 20 seconds and avoid touching your eyes, nose and mouth. Clean and disinfect frequently touched surfaces daily. Stay home if you are not feeling well.**

## CORONAVIRUS RESPONSE (HOW YOU CAN HELP)

If your firm has retooled to produce personal protection equipment (PPE) and you want to get your products to those in need please direct your inquiries to [dtmb-vendoremergency@michigan.gov](mailto:dtmb-vendoremergency@michigan.gov).

The state launched a new website [www.michigan.gov/fightcovid19](http://www.michigan.gov/fightcovid19) to seek medical professionals and citizens to volunteer to help fight the pandemic.

Send a video message to a loved one in a nursing home to show they are not alone. Governor Whitmer is encouraging nursing homes to facilitate virtual visits via electronic communication means. Contact our office if you need assistance in getting the cooperation of your local nursing home.

## IF YOU ARE AN **ESSENTIAL CRITICAL WORKER** WHO HAS BEEN EXPOSED TO COVID-19

### DO

- Take your temperature before work.
- Wear a face mask at all times.
- Practice social distancing in the work-place as work duties permit.

### DON'T

- Stay at work if you become sick.
- Share headsets or objects used near face.
- Congregate in the break room or other crowded places.

## CORONAVIRUS RESPONSE (FEDERAL)

FEMA and HHS and the private sector have shipped or are en route to deliver: 76.5 million N95 masks, 107.2 million surgical masks, 7.2 million face shields, 15.3 million surgical gowns, 811.9 million gloves and 8,450 medical beds.

FEMA has shipped 10,571 ventilators from the Strategic National Stockpile and the Department of Defense to the states as of April 6<sup>th</sup>. **Michigan has received 700 ventilators**, the third largest amount only behind New Jersey (1,558) and New York (4,440).

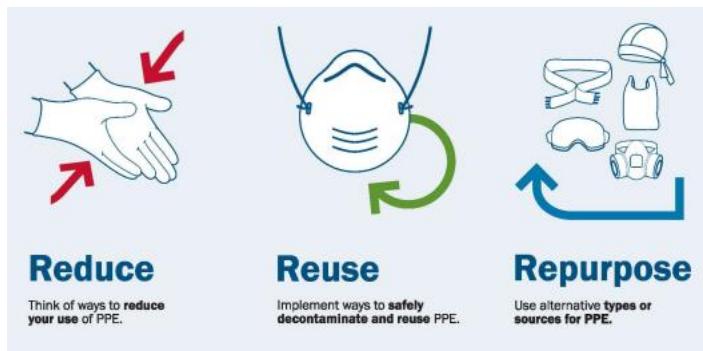
The CDC is preparing to deploy a Federal Medical Station to Michigan that can treat up to 250 people.

Forty-two states and four territories have issued stay-at-home orders affecting more than 300 million Americans.

President Trump issued the Opening Up America Again testing blueprint to guide states' plans.

All coronavirus testing for the public will be fully covered by private insurance or the federal government.

Do to the shortage of PPE, FEMA and the CDC are urging Americans in all industries to reduce, reuse and repurpose PPE to extend the supply. You can find more information [here](#).



**REDUCE** – Use delivery services, electronic communication and considering extending the use of non-visibly soiled PPE beyond single point of contact use.

**REUSE** – Decontaminate PPE using acceptable practices & standards.

**REPURPOSE** – Use alternative means of protection in low-risk situations to extend N95 respirators.

### **CORONAVIRUS RESPONSE (HELP FOR JOB PROVIDERS)**

Firms can also look here for more information on federal resources available to job providers:

<https://www.michiganbusiness.org/covid19/>

The Paycheck Protection Program has exhausted all \$349 billion that Congress allocated to it. More than 1.6 million loans were issued from over 4,900 financial institutions. **A second round of Paycheck Protection totaling \$310 billion is now available. For more info go to [Mipaycheckprotection.com](https://mipaycheckprotection.com) to apply for this new round of forgivable payroll loans.**

MEDC Call Center stands ready to support businesses looking for assistance through other available state programs. For more information, visit the MEDC's website: [www.michiganbusiness.org](http://www.michiganbusiness.org) or call 888.522.0103.

The Small Business Association of Michigan has a daily Facebook live feed to answer questions of job providers around the state. The feed is open to members and non-members alike. You can find them here at 3:00 p.m. <https://www.facebook.com/SmallBusinessAssociationofMichigan/>

### **CORONAVIRUS RESPONSE (HELP FOR DISPLACED WORKERS)**

Here is the link to the online application: [www.michigan.gov/UIA](http://www.michigan.gov/UIA) or you can call (865) 500-0017.

In response to the COVID-19 pandemic, Governor Whitmer has expanded the eligibility to:

- Workers who are sick, quarantined or immunocompromised and who do not have access to paid family and medical leave or are laid off.
- Workers caring for children out of school or ill family members and do not have access to paid family and medical leave or are laid off.
- First responders who become sick or are quarantined due to exposure to COVID-19 and do not have paid family and medical leave or are laid off.

Self-employed and contracted employees are still not eligible for Michigan Unemployment Assistance, but the federal stimulus package has expanded eligibility to this group of displaced workers through a Pandemic Unemployment Assistance Fund. **The Michigan Unemployment Insurance Agency is now ready for applications of 1099 contractors and self-employed to seek unemployment assistance.**

**Apparently, Michigan is the first state in the nation to receive pandemic unemployment checks.**

## UNEMPLOYMENT INSURANCE File Your Claim By **Last Name**

**ONLINE FILING SCHEDULE:**

**michigan.gov/uia**

<p><b>A-L</b> FILE CLAIMS</p> <p><b>Monday</b> <b>Wednesday</b> <b>Friday</b></p>	<p><b>M-Z</b> FILE CLAIMS</p> <p><b>Sunday</b> <b>Tuesday</b> <b>Thursday</b></p>
---	---

Saturday if you missed your days  
**WEBSITE IS 24/7**

**CALL CENTER FILING SCHEDULE:**

**1-866-500-0017**

<p><b>A-L</b> CALL ON</p> <p><b>Monday</b> <b>&amp;</b> <b>Wednesday</b></p>	<p><b>M-Z</b> CALL ON</p> <p><b>Tuesday</b> <b>&amp;</b> <b>Thursday</b></p>
--	--

Friday if you missed your days  
**8 AM-5PM MON-FRI**

The day or time of day in which a claim is filed will not impact whether you receive benefits or your benefit amount. Additionally, your claim can be backdated to reflect the date you were laid off or let go due to COVID-19.

**Call centers have expanded to be open from 8:00 a.m. to 6:00 p.m. Monday thru Friday and on Saturday from 7:00 a.m. to 2:00 p.m.**

### SCHOOL STATUS

Governor Whitmer has closed schools for the remainder of the school year. Districts will develop plans to ensure their students continue to learn and implement them no later than April 28<sup>th</sup>.

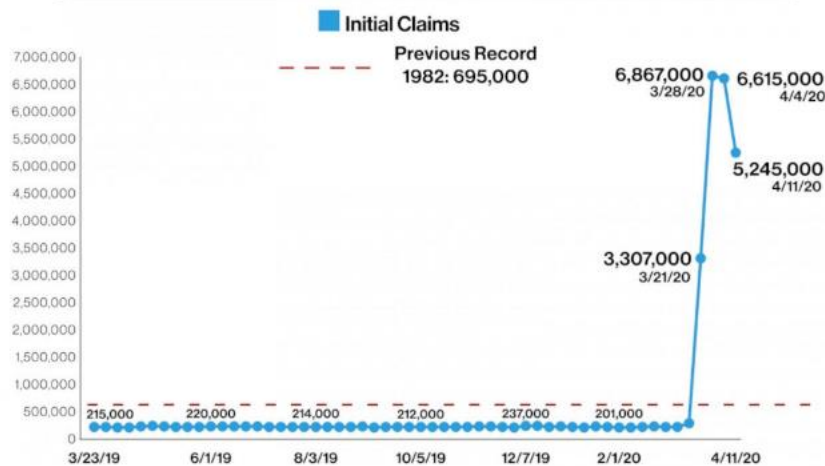
### ECONOMIC IMPACT

The state could be down billions of dollars in tax revenue for the current fiscal year (ending September 30<sup>th</sup>) and next year's budget due to the slowdown in the state and national economy.

More than 6.5 million Americans applied for unemployment benefits each week for two weeks due to the stay-at-home orders and non-essential business shutdowns issued across the country. That is nearly **10 times** the previous record week for a surge in applications that was set in 1982. **In just one month's time, more than 20 million Americans have filed for unemployment benefits**, this has nearly wiped out all the job gains since the Great Recession of 2008-09. It is hoped that these losses are only temporary, and that Americans will be returned to work once this crisis has passed.

## Unemployment Insurance

INITIAL CLAIMS PER WEEK



SOURCE: US Department of Labor

abc NEWS

**More than 1 million Michiganders** have filed for unemployment since the business shutdown orders began. Economists speculate that the Michigan Unemployment Trust Fund could be drained in as little as two months due to the surge in filings. The state would have to borrow to continue making payments and eventually might have to raise business taxes to replenish the fund. This is even more troubling considering that Michigan had the 3<sup>rd</sup> highest unemployment reserve in the nation – about \$4.6 billion in the unemployment fund at the end of last year.

Wall Street analysts predict that this pandemic could destroy \$5 trillion in global economic growth over the next two years which would be like losing the entire Japanese economy to put that into perspective.

#### **WHERE TO FIND MORE INFORMATION**

Visit [www.michigan.gov/coronavirus](http://www.michigan.gov/coronavirus) to find a complete list of the governor's executive orders dealing with the COVID-19 pandemic. This is also the best place to start to answer any questions you might have.